



**ONLEY GROUNDS
EQUESTRIAN COMPLEX**

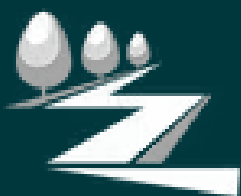
Onley Grounds Equestrian Complex

Rugby Polo Club
Beach Bar and Grill
The Forge Restaurant
Chukka Bar

CURRENT AS OF
JANUARY 2025

Hosting international,
national and local events

ANY NEEDS AND
REQUIREMENTS CAN
BE CATERED TO.



Willoughby Park

Willoughby Park

Onley Grounds Equestrian Complex
Rugby Polo Club
Beach Bar and Grill
The Forge Restaurant
Chukka Bar

CURRENT AS OF
JANUARY 2025

Hosting international,
national and local events

ANY NEEDS AND
REQUIREMENTS CAN
BE CATERED TO.

Contents

International Indoor Arena 4

International Outdoor Arena 5

Polo Arena 6

Indoor Collecting Arena 7

Polo Facilities 8

The Forge 9

Beach Bar and Grill 10

Hideaway Cafe 11

Chukka Bar 12

Classroom 13

Hook Up 14

Facilities 15

On-site Shopping 16

Catering Facilities 17



International Indoor Arena

A generous enclosed arena of 72m x 40m on a well maintained Andrews Bowen Wax surface, sound system for music and commentary, and adjustable lights. Overlooked by the Forge Restaurant and viewing galleries. Full international set of Mosswood showjumps, FDS timing system, long and short arena boards, commentary system from the judges box and wireless microphone.





International Outdoor Arena

Boasting a massive 80m x 100m on a well maintained Andrews Bowen Wax surface, sound system for music and commentary.

Overlooked by the Beach Bar and Grill.

Full international set of Mosswood showjumps, FDS timing system, long and short arena boards, commentary system from the judges box and wireless microphone.

Fenced with moveable white fencing, meaning it can be split into multiple arenas if necessary. The main arena also has two additional collecting rings of 24m x 60m already set up, with permanent fencing adjacent to the main arena





Polo Arena

100m x 45m on a well maintained Andrews Bowen Wax surface, sound system for music and commentary, floodlights, and mobile scoreboard. Overlooked by the Chukka Bar, our onsite sports bar.

Fully walled arena with polo goals at either end. This arena can be used for anything with a removable judges box, this can be fenced with removable white fencing. Although this is geared towards polo it can be used for mounted games, horseball, showing, jumping, dressage etc.



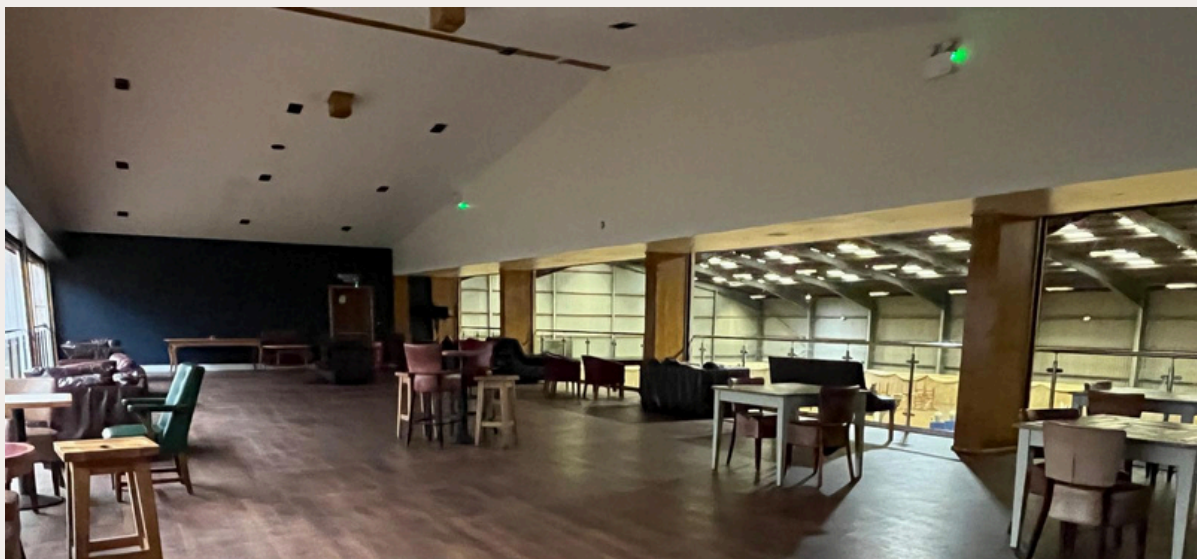


Indoor Collecting Arena

The indoor collecting arena is connected to the main international indoor arena by an indoor tunnel, and has a large door to the Polo Arena meaning it can be used alongside either arena.

Its is overlooked by The Chukka Bar, Viewing area connected to The Forge and The Hideaway Café.

This arena is 54m x 22m and surfaced with an Andrews Bowen Wax surface, it has a set of warm up fences from Mosswood Showjumps, commentary and music, with adjustable lighting.





Polo Facilities

On-site at Onley Grounds we have two line marked and boarded pitches with goals, plus a stick and ball pitch, the polo pitches are situated at the far end of the complex, with 60 acres in total of mown lawn, this can be used for any variety of events including Dog shows, Pony Club events, Showing etc.

These pitches also have separate tie-up areas and a wash bay on hard standing, and toilet facilities.

Our other site; Ashlawn has two boarded and line marked pitches, two wash bays and pony tie-ups, toilet facilities, club house with food and drink preparation facilities, outside seating and a mobile scoreboard all within a secure, enclosed area.





The Forge

The Forge is our main restaurant overlooking the international indoor arena, centred around a fine dining experience this venue serves an array of dishes such as steak, mussels and Crème Brulee; along with our famed Sunday Roasts, there is something for everyone to enjoy next to our roaring fire.

This room can also be extended with the attached ballroom, which stretches out across the viewing gallery overlooking the arenas.





Beach Bar & Grill

Overlooking the International Outdoor Arena, sit on a sun lounger with a cocktail at Warwickshire's answer to the sunshine tour. Serving a range of plates, such as; burgers, wraps and skewers all prepared on our wood fired grills. Or just grab a drink and ice-cream to watch the action!!





Hideaway Café

The Hideaway cafe is tucked away on the balcony overlooking the indoor warm up, serving all day with quick service and takeaway options for those show days; cakes, cheesy chips and everything in-between.

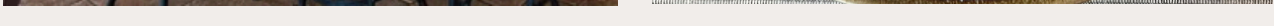




Chukka Bar

Our Chukka Bar is the perfect way to unwind with a game of pool or darts, or just having a cocktail watching the racing. The menu is based around quality pub grub with chicken wings, burgers and a whole range of Gins, Cocktails and on tap draught ciders and beers to sample.

The Chukka Bar overlooks the Polo arena and indoor warm up ring giving a view over all the action!!





Classroom

Our 'classroom' is situated opposite the main show office and can be hired out for conferences and events. We have many large shows use this as a show office to run their events out of. It has tea and coffee facilities, a sink, big screen and can be furnished according to requirements.





Car Parking & Hook-Up

Large hard standing car park with unlimited hook up availability, along with our new premium hook up spaces; an enclosed patio adjacent to the stable block, all on the hard standing, well situated meaning all the arenas are within a short walk.



Facilities

We can cater to almost any requirement a show might have, with roaming wireless microphones, surround sound speakers, a roster of judges for any discipline, course builders, stewards and arena party. We can provide any staffing or equipment you may need to make your event a success.



Towcester Vets

Based on-site, the practice offer equine orthopaedic and performance assessments, as well as regular emergency treatments and 24/7 Ambulatory service.



Viewing Gallery

Our viewing gallery overlooking the International Indoor arena, with comfy seating, electric and lights its the perfect place to sit and watch the action.



Sharman's First Aid

Our registered First Aiders who are available to book for dates at the venue. As well as supplying registered first aiders to the events they come equipped with Defibrillators and more



Toilet and Shower Block

A block of 2 wet rooms with showers sinks and toilets, plus seperate ladies, mens and disabled facilities. In addition to this the venue has ladies and mens facilities at the Beach Bar/International Outdoor Arena. up by the cafe and in The Forge.

On Site Shopping

We have several shops on-site which can be open for the duration of any show held here at Onley Grounds.



Harley Equestrain

Harley Equestrain is situated adjacent to the International Indoor Arena, they stock everything from Breeches and Treats to Saddlery.



Willoughby Park Polo

A family run shop stocking all polo necessities, with an embroidery machine to personalise clothing, saddle pads and rugs.



Willoughby Park Rug Wash

Based at the Polo shop, Willoughby Park Rug Wash are available for cleaning and repairs.

Catering Facilities

Our catering team are able to work with with any events to supply different menus if needed, alongside the café and regular Forge and Chukka Bar menus they can provide buffets, gala dinners and more for judges and staff or visitors.

